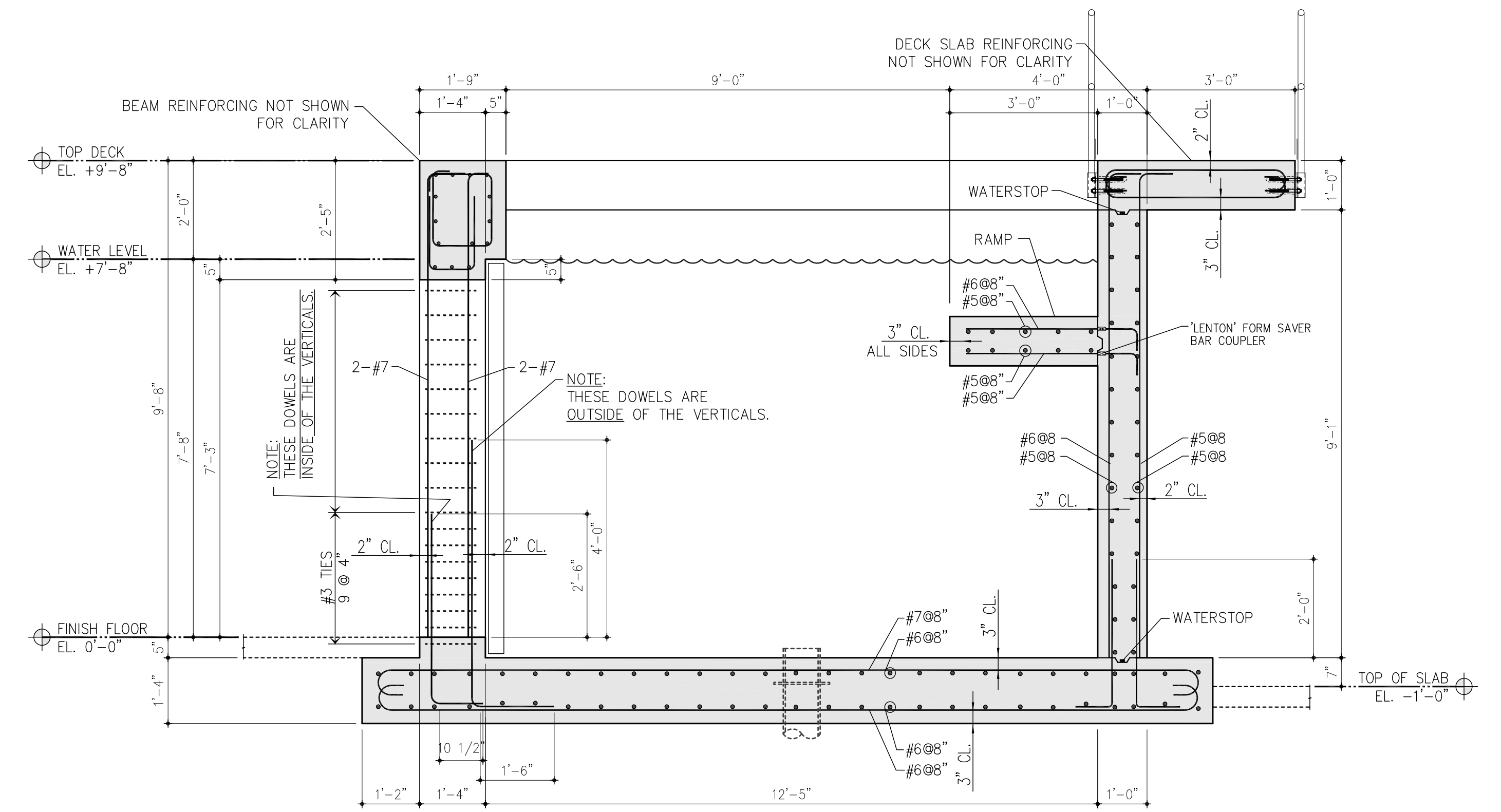
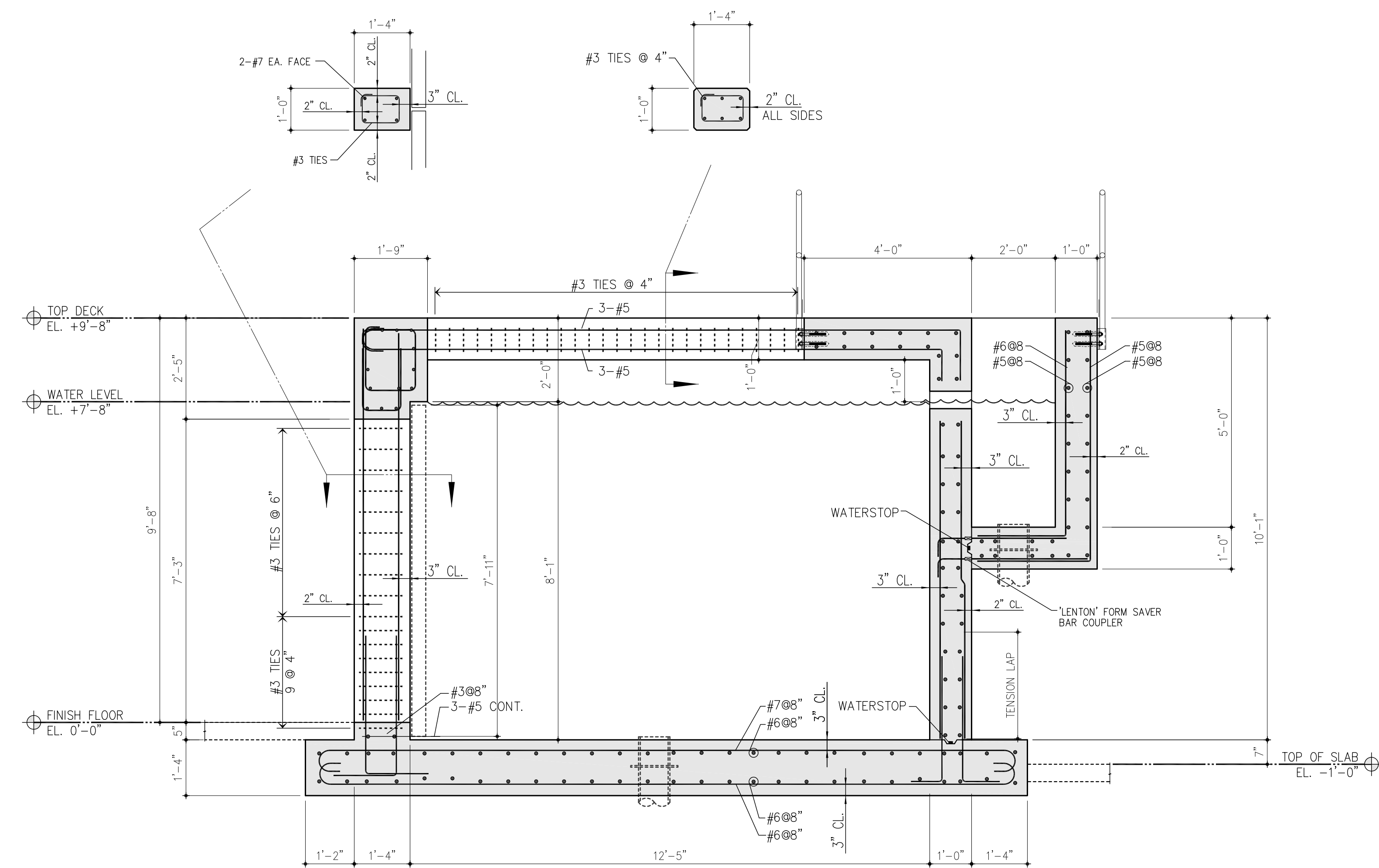


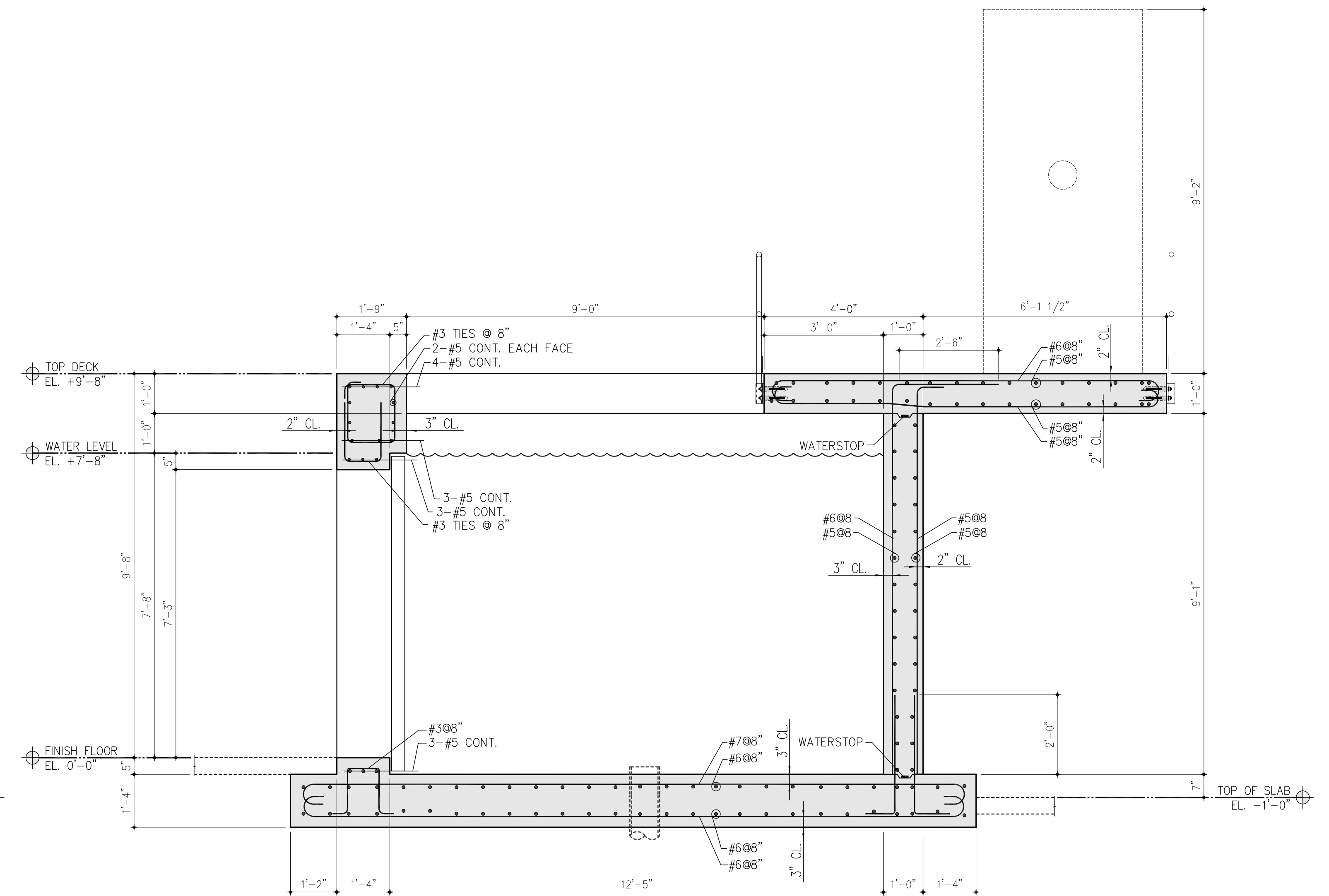
SECTION 2
1/2" = 1'-0"
TS-4



SECTION 1
1/2" = 1'-0"
TS-4



SECTION 4
1/2" = 1'-0"
TS-4



SECTION 3
1/2" = 1'-0"
TS-4

PELLER & ASSOCIATES, Inc.
STRUCTURAL ENGINEERING
842 Clearwater
Clearwater, FL 34615-1577
Tel: (408) 899-1660
Fax: (408) 899-1605

STATE OF TEXAS
MIGUEL PELLER
47889
PROFESSIONAL ENGINEER
06/30/2015

Accessibility to Persons with Disabilities
This drawing contains levels and elements critical to accessibility. Access to Disabled Persons as specified in specification section 0305. Contractor shall provide verification and certification of Compliance with the applicable accessibility regulations.

ISSUE FOR CONSTRUCTION

GALLERY FURNITURE

Houston Texas

SECTIONS

Revision No.	Revision Date
1	9-26-14

By	KL	Chk	MP
Date	11/19	Cont	
Issue	SEPTEMBER 8, 2014		

TS-4